

## swivel

### ANDREW COLOPY

Rice University

Set among the sublime Icelandic landscape is a series of subtly enigmatic figures. Each a little different, their faceted mass responds to the environment at multiple scales. Adapting to immediate context and global orientation, the cabins maintain a predominant east-west axis while pivoting perpendicular or parallel to the approaching trail. The strategy affords a consistent southern facing roof for active and passive solar gain while serving as a means of cardinal orientation to hikers. The end of each cabin addresses an intermediate scale, swiveling to gesture toward the next cabin along the trail, further orienting hikers from the exterior but also from within as they gaze out the singular windows in the attenuated ends of each cabin, reflecting on either where they've come from or where they're headed. But this swivel also formally connects the larger network of cabins, making them both unique and interdependent while further reflecting the extent of the national territory they inhabit.

As objects in the landscape, the cabins are set apart and responsive to their environment, yet given the dark exterior, they appear equally as voids, background to the strong saturation and figuration of the surrounding scene. The exterior rain screen is continuous across roof and wall, reinforcing a volumetric quality while absorbing the warmth of the sun. Made from charred wood, the material is also exceptionally durable and sustainable while familiar to the local context. Aesthetically integrated, photovoltaics and rainwater collection and storage help the cabins be autonomous, and heavily insulated SIP construction makes them highly energy efficient, easily transported and assembled.

Inside, the dark exterior gives way to a bright, continuous plywood surface punctuated by spots of color, a reference to the bold exterior coloration of many vernacular cabins. Fold down bunks for 10 along the long high wall fold up to make extra space to gather in an efficient 350sf (32.5sm).



swivel

Set among the sublime Icelandic landscape is a series of subtly enigmatic figures. Each a little different, their faceted mass responds to the environment at multiple scales. Adapting to immediate context and global orientation, the cabins maintain a predominant east-west axis while pivoting perpendicular or parallel to the approaching trail. The strategy affords a consistent southern facing roof for active and passive solar gain while serving as a means of cardinal orientation to hikers. The end of each cabin addresses an intermediate scale, swiveling to gesture toward the next cabin along the trail, further orienting hikers from the exterior but also from within as they gaze out the singular window in the attenuated ends of each cabin, reflecting on others where they've come from or where they're headed. But this swivel also formally connects the larger network of cabins, making them both unique and interdependent while further reflecting the extent of the national territory they inhabit.

As objects in the landscape, the cabins are set apart and responsive to their environment, yet given the dark exterior, they appear equally as voids, background to the strong saturation and figurative of the surrounding scene. The exterior rain screen is continuous across roof and wall, reinforcing a volumetric quality while absorbing the warmth of the sun. Made from charred wood, the material is also exceptionally durable and sustainable while familiar to the local context. Aesthetically integrated, photovoltaics and rainwater collection and storage help the cabins be autonomous, and heavily insulated SIP construction makes them highly energy efficient, easy to transport and assembled.

Inside, the dark exterior gives way to a bright, continuous plywood surface punctuated by spots of color, a reference to the bold exterior coloration of many vernacular cabins. Fold down bunks for 10 along the long high wall foot up to make extra space to gather in an efficient 30sqf (22.5sqm).

**CORE / PATH RELATIONSHIP**  
Cabin forms maintain a predominant east-west axis while pivoting perpendicular or parallel to the trail to ensure a southern facing roof and provide sense of orientation to hikers.

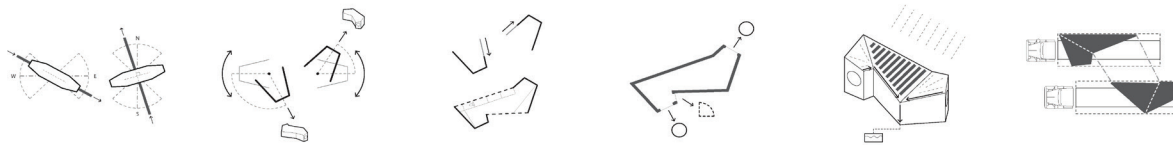
**SWIVEL + POINT**  
The attenuated ends of the cabin form swivel, pointing to the next closest cabin along the trail—a reminder where you've been and where you're headed.

**ADJUST + CONNECT**  
The volume adjusts to incorporate the core and rotated ends while maintaining a long wall for bunks and restroom.

**DOOR + WINDOW PLACEMENT**  
Circular windows at each end reinforce the orientation to nearby cabins, provide plenty of daylighting and views to the landscape. A single door at a recess in the volume helps shelter the entry.

**ENERGY + WATER**  
Always southern facing for maximum solar exposure, the roof slopes to a single point for water collection and storage.

**TRANSPORTATION + ASSEMBLY**  
Each cabin is divisible by two and prefabricated from lightweight structurally insulated panels for easy transport and assembly.



**CORE / PATH RELATIONSHIP**  
Cabin forms maintain a predominant east-west axis while pivoting perpendicular or parallel to the trail to ensure a southern facing roof and provide a sense of orientation to hikers.

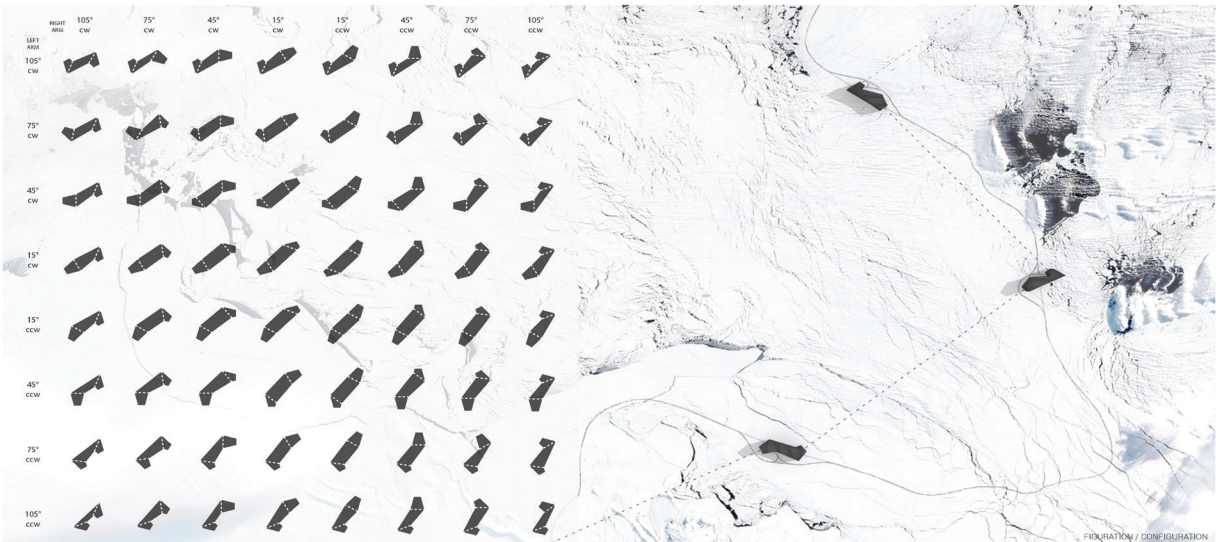
**SWIVEL + POINT**  
The attenuated ends of the cabin form swivel, pointing to the next closest cabin along the trail—a reminder where you've been and where you're headed.

**ADJUST + CONNECT**  
The volume adjusts to incorporate the core and rotated ends while creating a long wall for bunks and restroom.

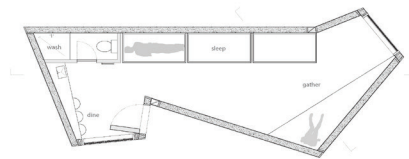
**DOOR + WINDOW PLACEMENT**  
Circular windows at each end reinforce the orientation to nearby cabins, provide plenty of daylighting and views to the landscape. A single door at a recess in the volume helps shelter the entry.

**ENERGY + WATER**  
Always southern facing for maximum solar exposure, the roof slopes to a single point for water collection and storage.

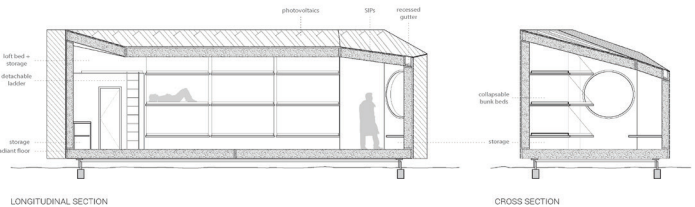
**TRANSPORTATION + ASSEMBLY**  
Each cabin is divisible by two and prefabricated from lightweight structurally insulated panels for easy transport and assembly.



FIGURATION / CONFIGURATION



EXAMPLE CABIN (350sqf)  
FLOOR PLAN  
3'10" x 17'  
3'1" x 17'



LONGITUDINAL SECTION

CROSS SECTION

